

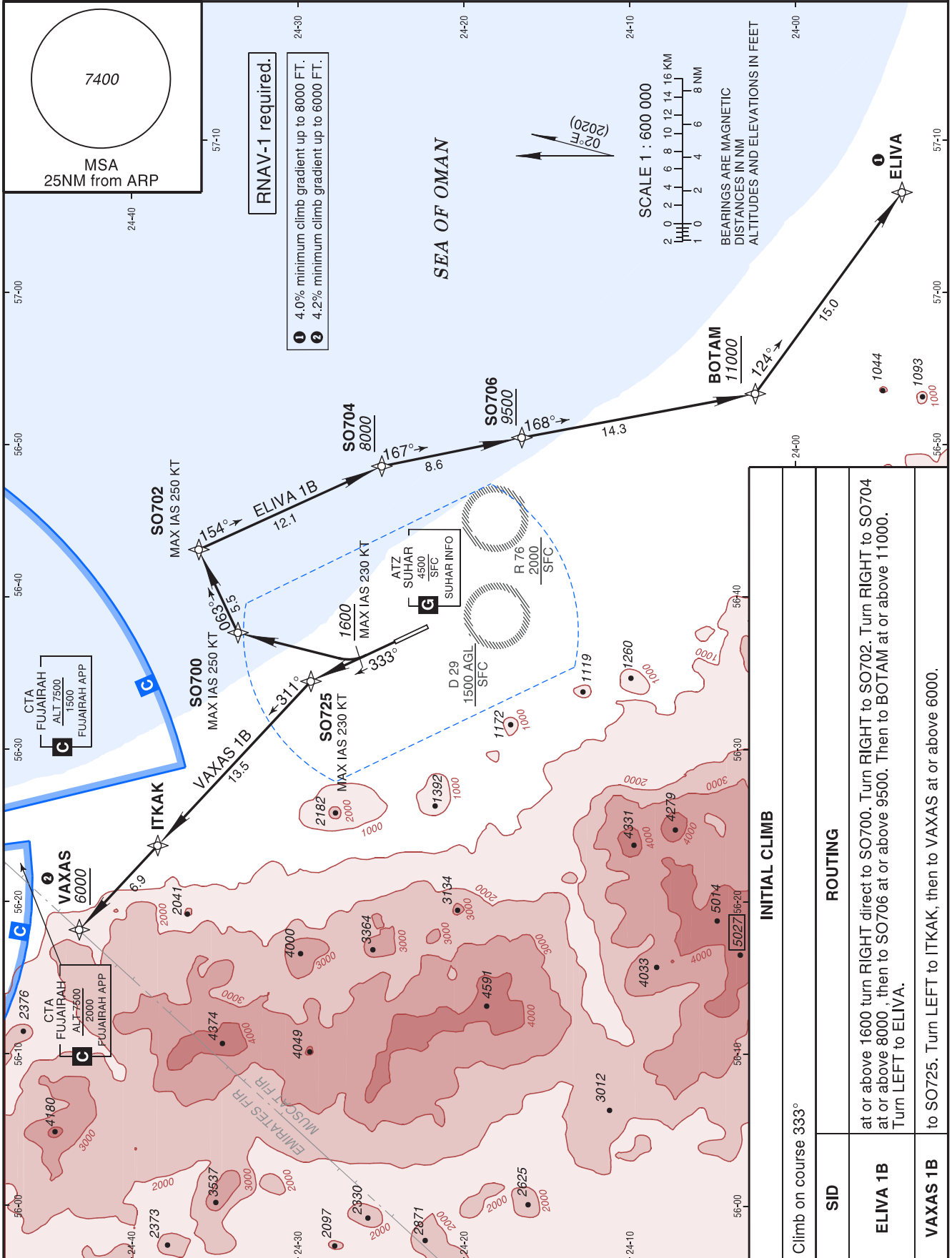
STANDARD DEPARTURE
CHART INSTRUMENT
(SID) - ICAO

AD ELEV 144 FT
Trans Alt 13000
Trans Level FL150

SUHAR Information 118.725

SUHAR/Suhar
OMAN
RWY 33

ELIVA 1B, VAXAS 1B RNAV (GNSS) DEPARTURE



Route Description: RNAV (GNSS) DEPARTURE RWY 33

Path descriptor	Fix identifier	Flyover	Course Magnetic (True)	Turn direction	Altitude	Speed limit	Magnetic variation	Distance	Navigation performance
VAXAS 1B DEPARTURE									
CF	SO725		333° (334.8°)			230 KT	2°E		RNAV 1
TF	ITKAK		311° (313.1°)	L			2°E	13.5	RNAV 1
TF	VAXAS		311° (313.0°)		+6000		2°E	6.9	RNAV 1
ELIVA 1B DEPARTURE									
CA			333° (334.8°)		+1600	230 KT	2°E		RNAV 1
DF	SO700			R		250 KT	2°E		RNAV 1
TF	SO702		063° (064.8°)	R		250 KT	2°E	5.5	RNAV 1
TF	SO704		154° (155.5°)	R	+8000		2°E	12.1	RNAV 1
TF	SO706		167° (168.5°)	R	+9500		2°E	8.6	RNAV 1
TF	BOTAM		168° (169.3°)		+11000		2°E	14.3	RNAV 1
TF	ELIVA		124° (126.0°)	L			2°E	15.0	RNAV 1

Aeronautical Data Tabulation: RNAV (GNSS) DEPARTURE RWY 33

Waypoint / Fix	Latitude	Longitude	Latitude (MIN)	Longitude (MIN)	Notes
SO725	N24°29'12.7"	E056°34'26.1"	N24°29.212'	E056°34.435'	
ITKAK	N24°38'25.5"	E056°23'38.8"	N24°38.425'	E056°23.647'	
VAXAS	N24°43'08.0"	E056°18'07.0"	N24°43.133'	E056°18.117'	
SO700	N24°33'36.0"	E056°37'38.0"	N24°33.600'	E056°37.633'	
SO702	N24°35'57.0"	E056°43'06.0"	N24°35.950'	E056°43.100'	
SO704	N24°24'57.0"	E056°48'35.0"	N24°24.950'	E056°48.583'	
SO706	N24°16'31.0"	E056°50'27.0"	N24°16.517'	E056°50.450'	
BOTAM	N24°02'26.5"	E056°53'20.1"	N24°02.442'	E056°53.335'	
ELIVA	N23°53'34.8"	E057°06'34.3"	N23°53.580'	E057°06.572'	